

**North Devon Link Road – NDLR – A361
(Portmore to Bourners Bridge)
Traffic Bulletin – 16.01.24**

Further to our Bulletin of 5th January 2024, we are now planning closing Station Road at South Molton for 10 x days. This closure is to facilitate permanent works, including the full depth reconstruction of Station Road junction. Full details of the closure and diversion routes are listed on page 2 & 3.

Night time closures between Landkey Roundabout and North Aller Roundabout from 15th – 17th January have now been rescheduled

Please find in this bulletin details of upcoming traffic management on the North Devon Link Road in January and February 2024.

We apologise for any inconvenience

Night time closures Jan / Feb 2024

As previously communicated, other planned Traffic Management remains as previously detailed including:

- A. Night time closure between Bish Mill and North Aller from: 18th Jan to 21st Jan.
- B. Night time closure between Landkey and North Aller from 22nd Jan to 10th Feb.
- C. Closure of road between West Buckland and A361 between 11th Feb to 17th Feb.
- D. Closure of road between Portmore Roundabout and Landkey Roundabout from 12th Feb to 17th Feb.

Additional information regarding closures & diversion routes are detailed on pages 2, 3, 4, 5, & 6

GRIFFITHS

For all Traffic related matters
24/7 call Traffic Safety Control
Officer (TSCO)

Tel: 07889 225393*

Your Public Liaison Officer for
the NDLR is Lynda Sudlow of
Griffiths. She can be
contacted:

E: NDLR@alungriffiths.co.uk

T: 0330 041 4637*

Calls are monitored out of
normal work hours and a
voicemail facility is available.

Please check out our project
website :

community.alungriffiths.co.uk

If you would like to subscribe
to receive future Newsletters
and Bulletins, please click
[HERE](#) and complete the online
form for Mail Chimp. OR use
this QR code:



SCAN ME

Calls to these numbers are charged at national
call rates and included in inclusive minute
plans from landlines and mobiles

**CONSIDERATE
CONSTRUCTORS
SCHEME**



North Devon Link Road – NDLR – A361 (Portmore to Borneers Bridge) Traffic Bulletin – 16.01.24

Please find in this bulletin details of upcoming traffic management on the North Devon Link Road in January and February 2024.

There will be significant works carried out in the upcoming period. Most of the works will be carried out at night to minimize disruption to the travelling public. We will continue to update you via separate bulletins with more detail of the works.

We apologise for any inconvenience

24Hr Closure: Station Road – 30th Jan – 9th Feb

Day / Date	Start	Finish
Tues: 30.01.24	4am	Fri: 09.02.24 - 6am

Station Road Full Closure – Jan 2024

During the closure of Station Road, new permanent surfacing will be completed, white lining, kerbing and a central island will be completed.

Please see Page 2 of this bulletin for Diversion Maps. Access to North Molton will remain open. We apologise for any inconvenience.

GRIFFITHS

For all Traffic related matters
24/7 call Traffic Safety Control
Officer (TSCO)

Tel: 07889 225393*

Your Public Liaison Officer for
the NDLR is Lynda Sudlow of
Griffiths. She can be
contacted:

E: NDLR@alungriffiths.co.uk

T: 0330 041 4637*

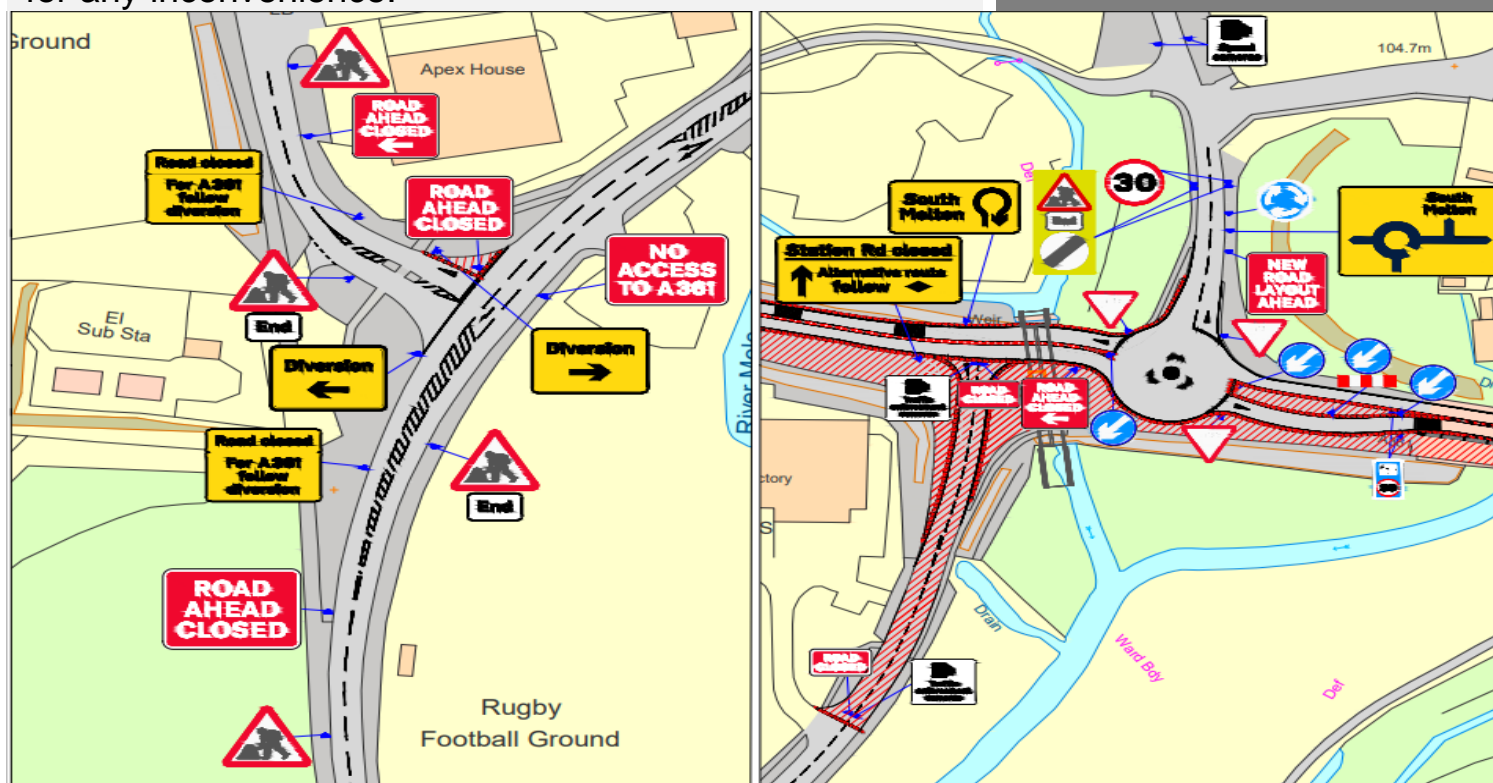
Calls are monitored out of
normal work hours and a
voicemail facility is available.

Please check out our project
website :

community.alungriffiths.co.uk

If you would like to subscribe
to receive future Newsletters
and Bulletins, please click
[HERE](#) and complete the online
form for Mail Chimp. OR use
this QR code:

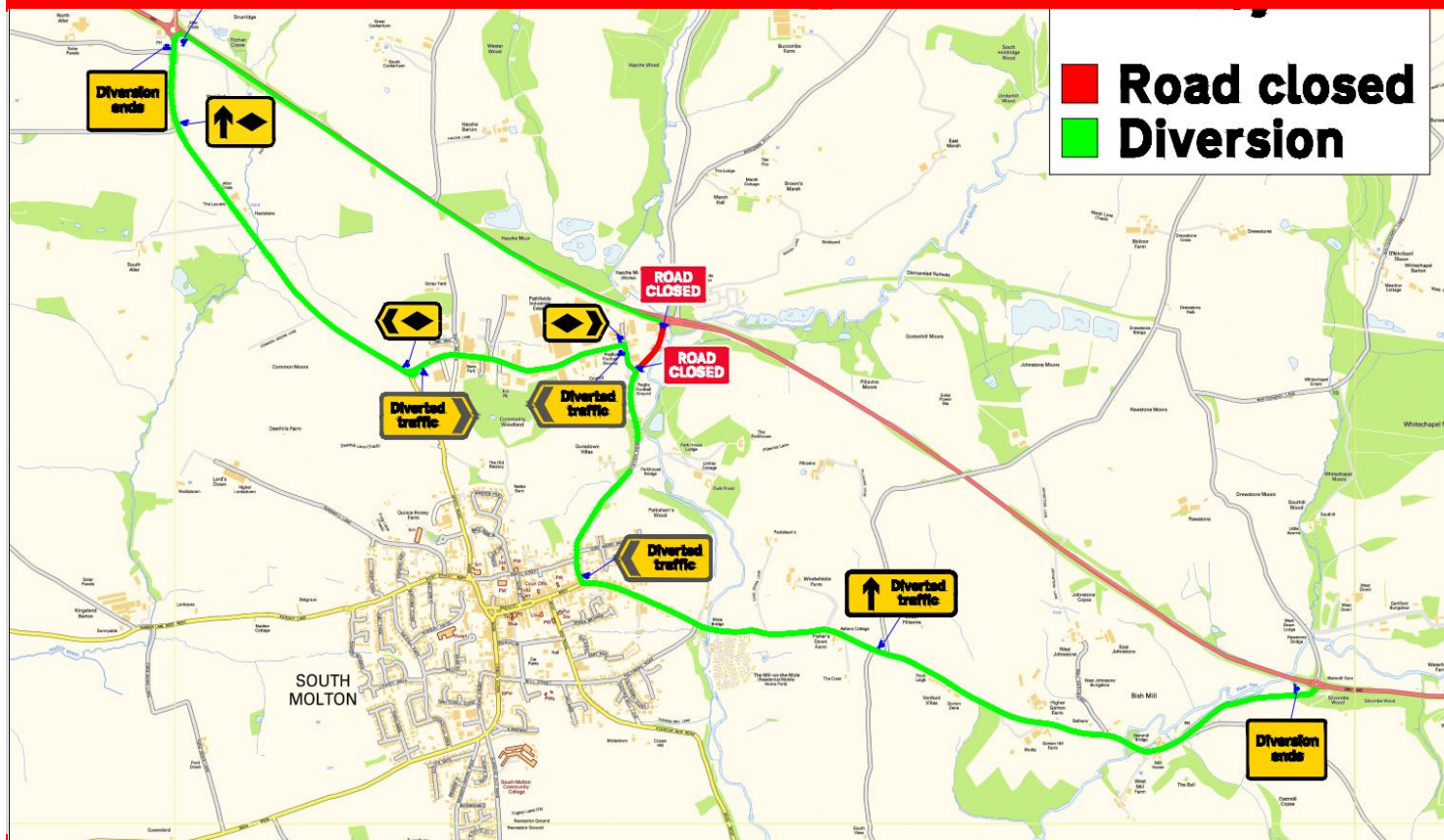
CONSIDERATE
CONSTRUCTORS
SCHEME



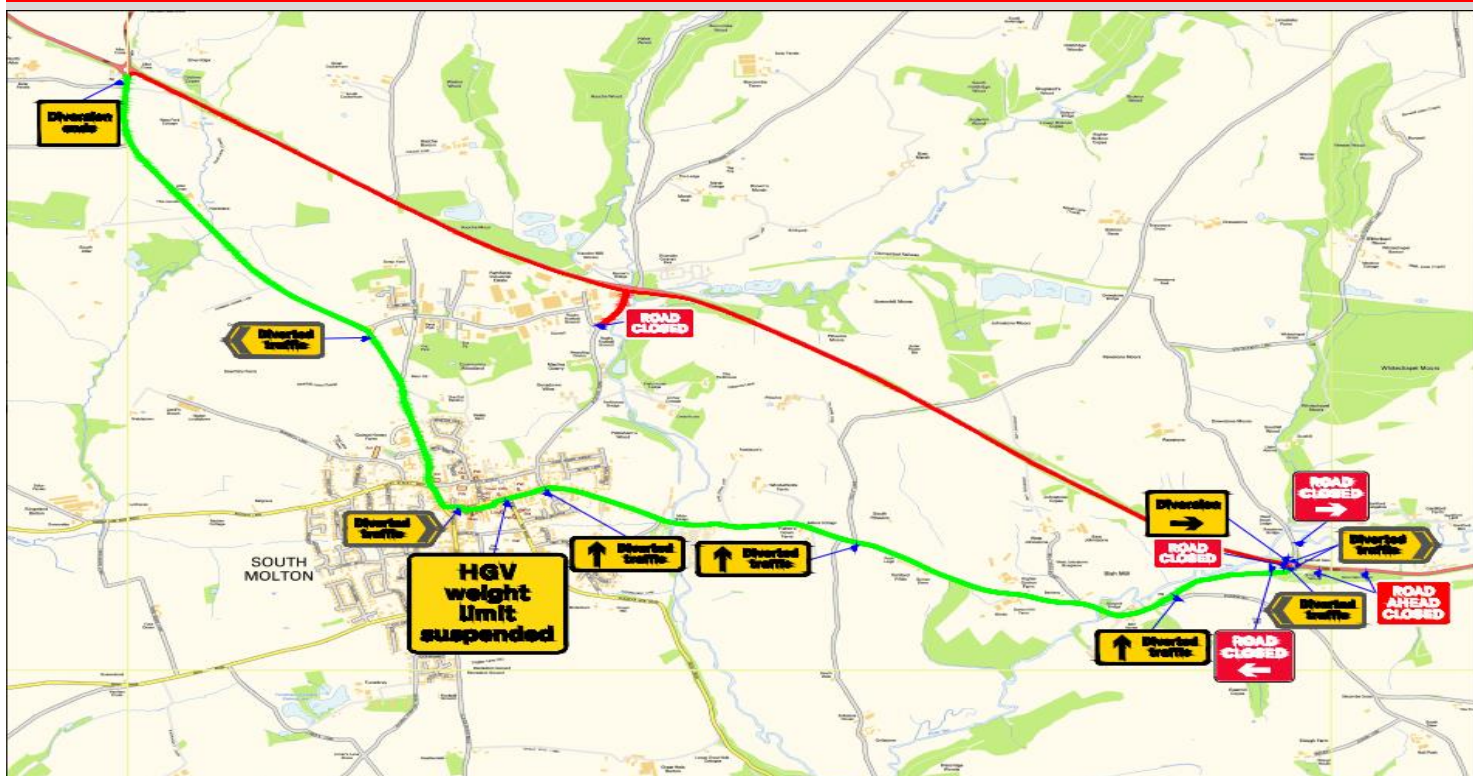
North Devon Link Road – NDLR – A361 (Portmore to Borners Bridge) Traffic Bulletin – 16.01.24

GRIFFITHS

Station Road – Diversion Route



Bish Mill Roundabout to North Aller Roundabout



North Devon Link Road – NDLR – A361 (Portmore to Borneers Bridge) Traffic Bulletin – 16.01.24

GRIFFITHS

Night Closures – Bish Mill Roundabout to North Aller Roundabout – Jan 2024

Further essential works are planned at Borneers Bridge, South Molton. Please see dates below. Access to North Molton will remain open. There will be a further closure of Station Road on Saturday 20th, the A361 will remain open in both directions. Please see Diversion Maps on page 2 of this

Day / Date	Start	Finish
Thur: 18.01.24	8pm	Fri: 19.01.24 - 6am
Fri: 19.01.24	8pm	Sat: 20.01.24 - 6am
Sat: 20.01.24	8pm	Sun: 21.01.24 - 6am

Night Closures – Landkey Roundabout to North Aller Roundabout – Jan/Feb 2024

Night work continues apace between Landkey to North Aller on the following dates for essential works and resurfacing . Please page 3 the for Diversion Map. We apologise for any inconvenience

Day / Date	Start	Finish
Mon: 22.01.24	8pm	Tues: 23.01.24 - 6am
Tues 23.01.24	8pm	Wed: 24.01.24 – 6am
Wed: 24.01.24	8pm	Thurs: 25.01.24 - 6am
Thur: 25.01.24	8pm	Fri: 26.01.24 - 6am
Fri: 26.01.24	8pm	Sat: 27.01.24 - 6am
Mon: 29.01.24	8pm	Tues: 30.01.24 - 6am
Tues 30.01.24	8pm	Wed: 31.01.24 – 6am
Wed: 31.01.24	8pm	Thurs: 01.02.24 - 6am
Thur: 01.02.24	8pm	Fri: 02.02.24 - 6am
Fri: 02.02.24	8pm	Sat: 03.02.24 - 6am
Mon: 05.02.24	8pm	Tues: 06.02.24 - 6am
Tues: 06.02.24	8pm	Wed: 07.02.24 – 6am
Wed: 07.02.24	8pm	Thurs: 08.02.24 - 6am
Thur: 08.02.24	8pm	Fri: 09.02.24 - 6am
Fri: 09.02.24	8pm	Sat: 10.02.24 - 6am

Further Bulletins will be issued regularly to give more details and confirm dates



GRIFFITHS



GRIFFITHS

North Devon Link Road – NDLR – A361 (Portmore to Borne's Bridge) Traffic Bulletin – 16.01.24

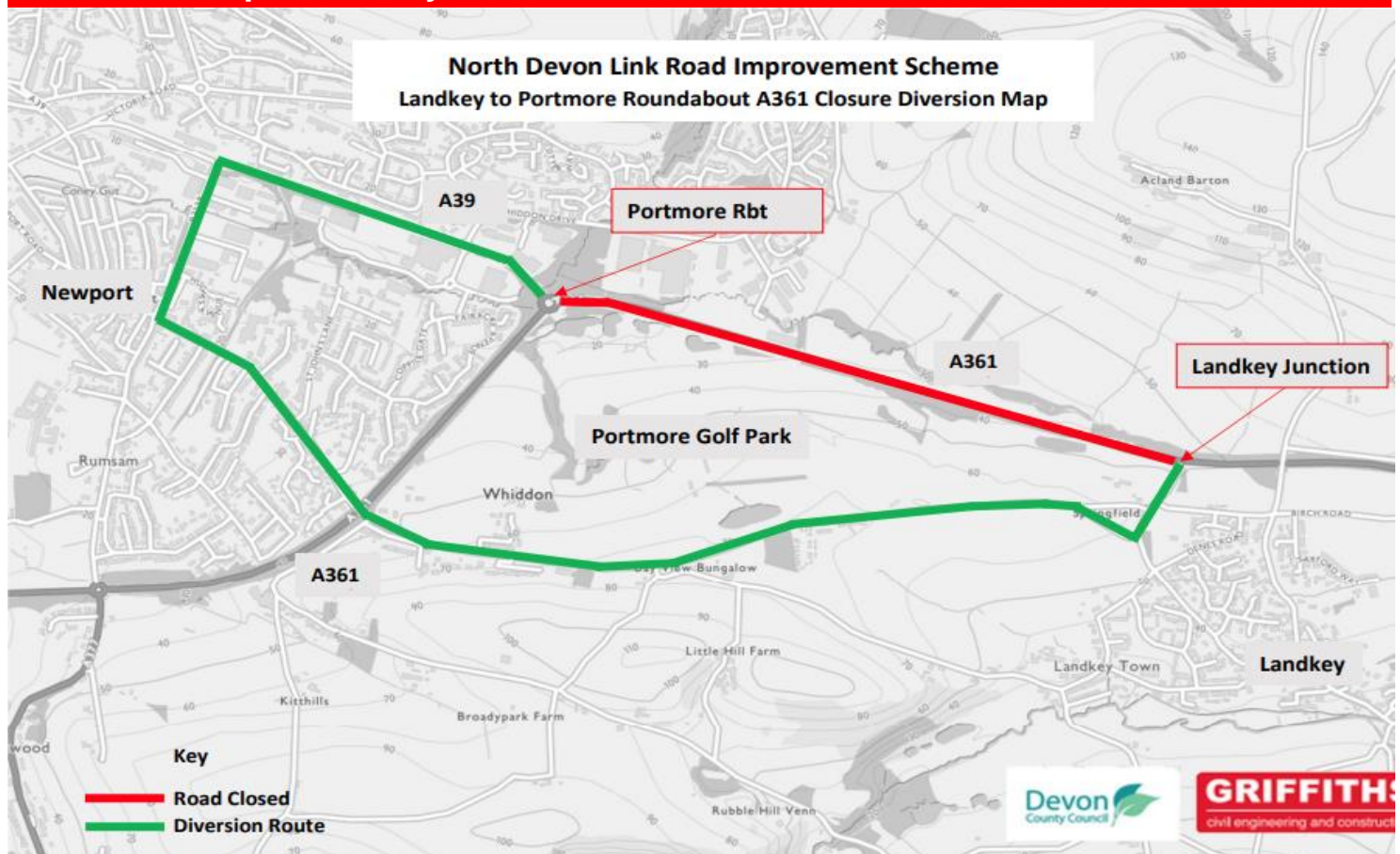
GRIFFITHS

Night Closures – Landkey Roundabout to Portmore Roundabout – Feb 2024

Road closures are required to allow the removal of temporary barrier installed along the route, completion of upgrades to existing drainage network and completion of the road construction around Landkey Junction.

Day / Date	Start	Finish
Mon: 12.02.24	8pm	Tues: 13.02.24 - 6am
Tues: 13.02.24	8pm	Wed: 14.02.24 - 6am
Wed: 14.02.24	8pm	Thur: 15.02.24 - 6am
Thur: 15.02.24	8pm	Fri: 16.02.24 - 6am
Fri: 16.02.24	8pm	Sat: 17.02.24 - 6am

Diversion Map – Landkey Roundabout to Portmore Roundabout



Further Bulletins will be issued regularly to give more details and confirm dates

**North Devon Link Road – NDLR – A361
(Portmore to Borners Bridge)
Traffic Bulletin – 16.01.24**

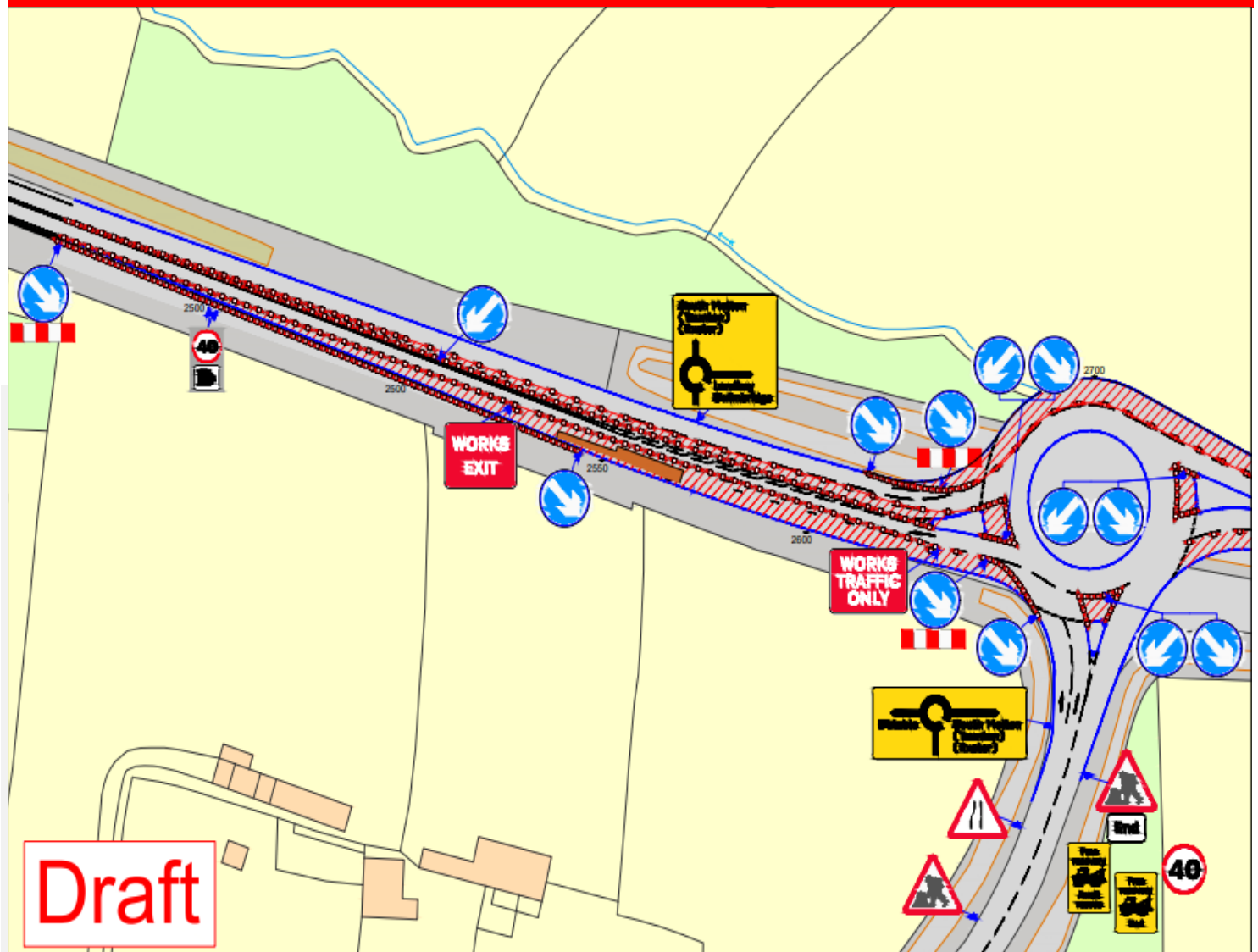
GRIFFITHS

New Road Layout Landkey Roundabout to Portmore Roundabout – Feb 2024

There will be a New Road Layout from Landkey Roundabout to Portmore Roundabout to facilitate the Full Depth reconstruction of part of the new carriageway.

Day / Date	Start	Finish
Tues: 13.02.24	5am	Sat : 17.02.24 - 5am

New Road Layout – Landkey Roundabout to Portmore Roundabout



Further Bulletins will be issued regularly to give more details and confirm dates