

Site Location / Drawing Title
CARBEAN, ST AUSTELL,
PL26 8XH

Client: OPENREACH	
Contract No	238
Date	19/10/2022
Drawn by	L.C/238
Approved By	T.J/238
Purpose of works	
DWG Version No	001
Amended by	XXXXXXXXXX
Amendment Date	XXXXXXXXXX
Scale	NOT TO SCALE
Sheet No	1 of 2

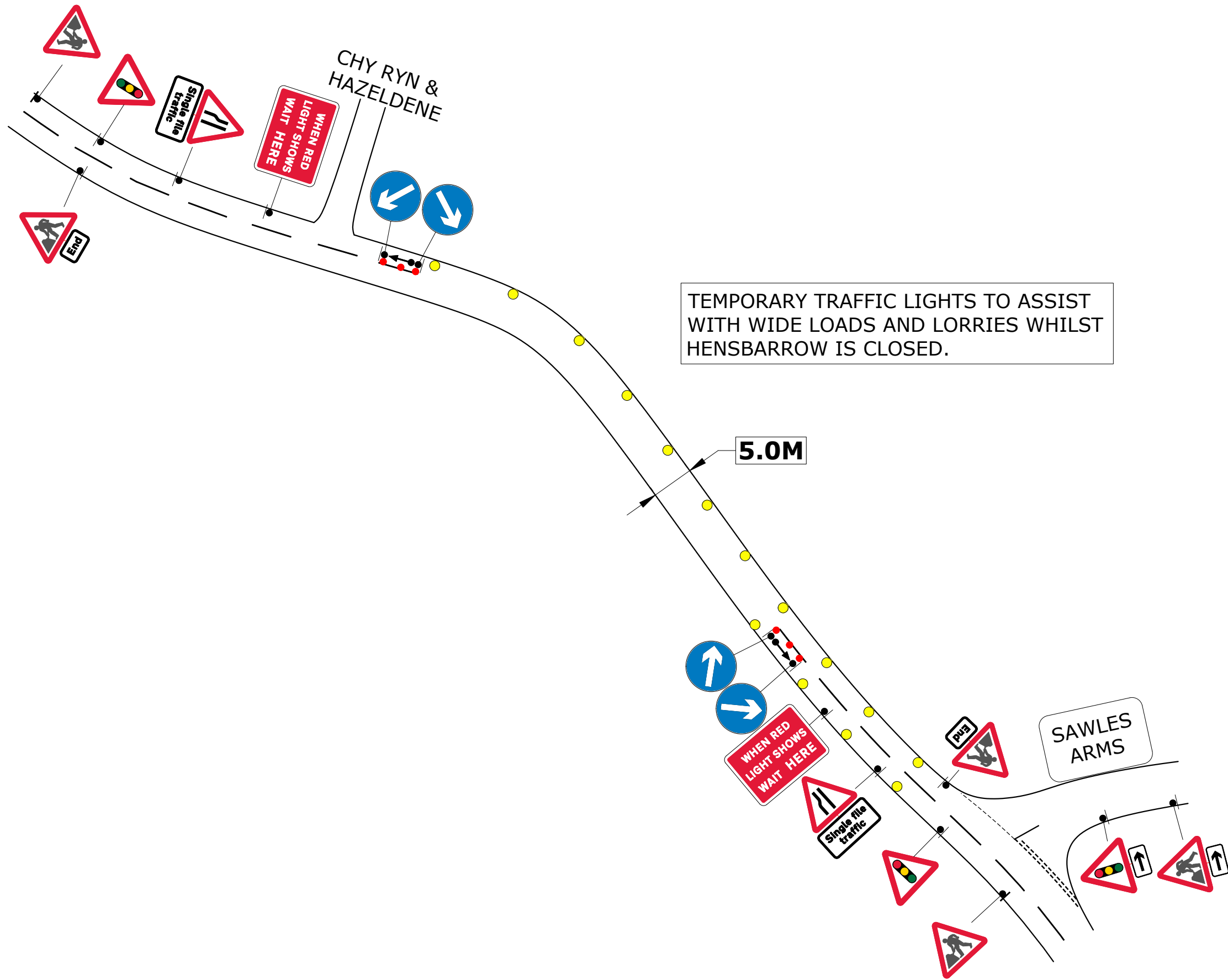
SPEED OF ROAD	30	MPH
DISTANCE FROM FIRST SIGN TO START OF SITE(D)	MIN	20 M
	MAX	45 M
SIDEWAYS SAFETY ZONE (S)	0.5M	
LONGWAYS CLEARANCE (L)	0.5M	
OS Licence No	OI - 0000000000	

KEY

- Traffic sign
- Traffic cone
- No Parking cone
- Temp Traffic signals
- Temp Ped Crossing
- Working Space
- Controlled area
- Pedestrian Barrier
- Perm signal head
- Bus Stop

PHASE 1		PHASE 2	
← →		← →	
R	20	R	20
G	50	G	50
PHASE 3		PHASE 4	
↕		↕	
R	XX	R	XX
G	XX	G	XX
PHASE 5		Ped Phase 6	
↕		◊	
R	XX	R	3
G	XX	G	7

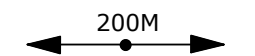
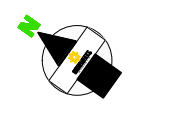
BLACKOUT TIME TO BE 7 SECONDS



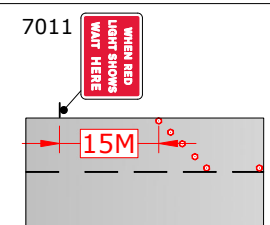
TEMPORARY TRAFFIC LIGHTS TO ASSIST WITH WIDE LOADS AND LORRIES WHILST HENSBARROW IS CLOSED.

5.0M

SAWLES ARMS

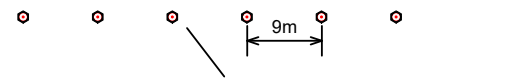


DISTANCE FROM DATUM POINT TO WAIT HERE BOARDS.



Note:
1) This distance may have to be increased in some cases to allow larger vehicles to pass the works.
2) Sign ref 7011 variants to be used for multiphase & pedestrian traffic signals.

DETAIL C1 (C1)



Single/Dual carriageway 40mph or less - 750mm traffic cones.
Single/Dual carriageway 50mph or more - 750mm traffic cones.

Notes:
1) During darkness, warning lights to BS EN 12352:2006 should be provided in accordance with Table A1.3 (Appendix 1).
2) For relaxation to Detail C1 see Table A1.3 (Appendix 1).

DETAIL B (B)



Single/Dual carriageway 50mph or more - 750mm traffic cones, spacing 1.5m.
Dual carriageway national speed limit - 750mm traffic cones, spacing 1.5m, relaxation 3m.

Notes:
1) During darkness, warning lights to BS EN 12352:2006 should be provided in accordance with Table A1.3 (Appendix 1).
2) 45° tapers have 1.2m spacing, no relaxations.
3) On motorways and NSL AP duals with hard shoulders, 1m cones will be required for both standard and relaxation works for lead tapers and the facing wall of lane changes.

The information in this drawing may not be copied or used by third parties without written consent from Sunbelt Rentals Ltd (Traffic Management). This layout is for installation by NRSWA, Lantra 12A,12B,12C,12D qualified persons.
All works shall be in accordance with Safety at Street Works and Road Works, A Code of Practice 2013 & Chapter 8

THIS DOCUMENT IS UNCONTROLLED WHEN PRINTED

The electronic version of this document is the approved and most current. Any printed version is uncontrolled and may not be current.