

Project Progress

Since our last newsletter, we have been busy on both sides of the river, commencing the installation of bridge sections including the curved bridge deck. This included the use of 2 cranes - weighing in at 500t and 120t. There is now much work required to ensure the curving bridge deck is ready for the next phase of construction with the installation of further bridge decks that will connect the existing bridge sections already installed. The remaining segments of the bridge deck are off site being painted and surfaced before they will be delivered to site ready to be lifted into place.

Upcoming Works

The remaining deck sections will be lifted into place directly from the wagons as they are delivered. This will be undertaken using complex lifting arrangements with up to three cranes – a lead crane will lift and support deck sections into place with tailing cranes lifting cable stays that will, ultimately, carry the forces and support the deck sections as they span the river. Barges will be launched into the river and fitted with Elevated Working Platforms, where operatives will be working to gain access to the bridge deck sections being lifted over the river. In the lead up to the lifts, clearways will be imposed on the delivery routes to allow access for the deliveries of cranes and bridge deck sections to site. We would like to take this opportunity to once again thank our neighbours for their understanding, and for their compliance with parking orders implemented to date. Following the completion of bridge lifts, stone used for the construction of crane pads will be removed from site by tipper trucks in preparedness for further landscaping which has commenced with the planting of trees and wild seeding.

Kepax Walking and Cycling Bridge Newsletter

Ecology

The construction of Kepax's new bridge spanning the River Severn has been met with a host of ecological challenges, prompting the adoption of innovative and environmentally sensitive construction practices. The unique nature of the River Severn and the diverse wildlife inhabiting its surroundings have steered our approach towards construction methods that prioritize ecological preservation. To address the migratory patterns of fish, particularly salmon, construction within the river channel is limited within periods of the migratory fish season. This precautionary measure is designed to prevent any disruption to the vital journey of these migratory fish, ensuring the continued health of the river ecosystem. In a concerted effort to safeguard the habitats of otters, meticulous care has been taken to minimize the removal of bankside vegetation. Recognizing the significance of these vegetated areas for otter protection, construction activities are strategically concentrated in zones that steer clear of the most optimal otter habitats. Otters, prevalent throughout the River Severn basin, have been identified in close proximity to the project site, further underscoring the need for ecological vigilance. The commitment to environmental preservation extends beyond construction timelines, with regular water quality monitoring being a cornerstone of our ecological stewardship. This ongoing assessment is crucial to mitigating any potential impact on the river and its surrounding habitats, with a dedicated team of specialists providing continuous support to identify and implement environmental enhancements promptly. The project's conscientious approach also considers the welfare of other species, such as birds, small mammals, and pollinators, as evidenced by thoughtful landscaping designs around the new Kepax bridge. Detailed information about these considerations is available on public info boards strategically placed along the construction area boundary, fostering transparency and community engagement. At the heart of this development is a deep-seated commitment to environmental protection, making the Kepax bridge project a beacon of responsible construction practices. As we forge ahead, we eagerly anticipate sharing more positive news about our ongoing efforts to protect and preserve the environment, not only during construction but well into the future.



Your Public Liaison Officer for this project is Neil Evans of Griffiths.

e: kepaxenquiries@alungriffiths.co.uk

t: 03301 071484*

***Calls to this number are charged at national call rates and included in inclusive minute plans from landlines and mobiles**

Calls are not monitored out of normal work hours. A voicemail facility is available.

For further information and pictures, please visit:

community.griffiths.co.uk

and search for "Kepax"

Working Hours

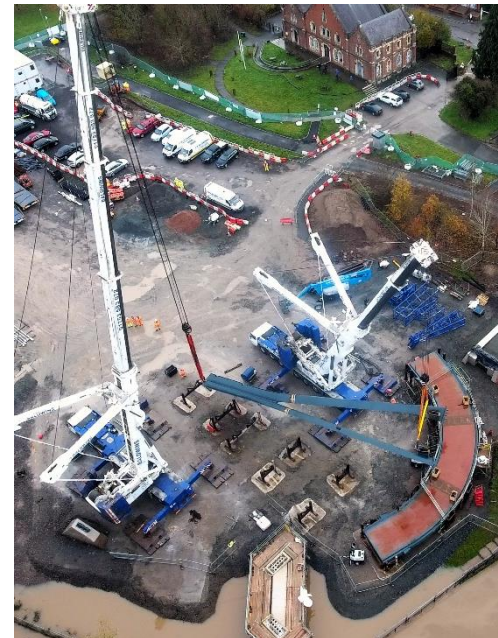
Monday to Friday

7am to 5pm

(These hours are subject to change)

Saturday

As Required



Griffiths' Bridge to Schools

Griffiths now have our own **Bridge to Schools** – an interactive 15m long replica of the second Severn bridge available to be taken to primary schools in the area. For further information, please contact our Public Liaison Officer. We have already booked in schools within Worcestershire for the 23/24 academic year, however we are looking to book for the 2024/25 academic year – please get in touch if you are a teacher at a Worcestershire primary school. If you have a community initiative or education event you think we may be able to assist with, please don't hesitate to get in touch.

We would be pleased to hear your comments. You can get in touch via our website community.griffiths.co.uk or by contacting our Public Liaison Officer via kepaxenquiries@alungriffiths.co.uk or 03301 071484*

*Calls to this number are charged at national call rates and included in inclusive minute plans from landlines and mobiles